

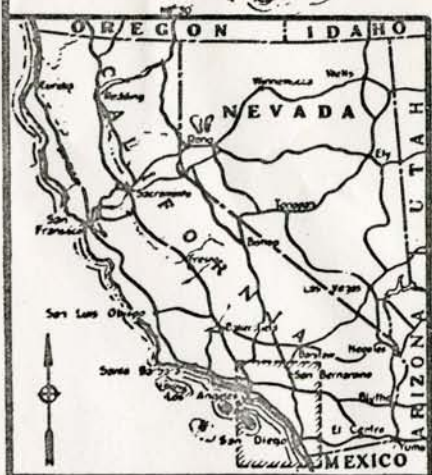
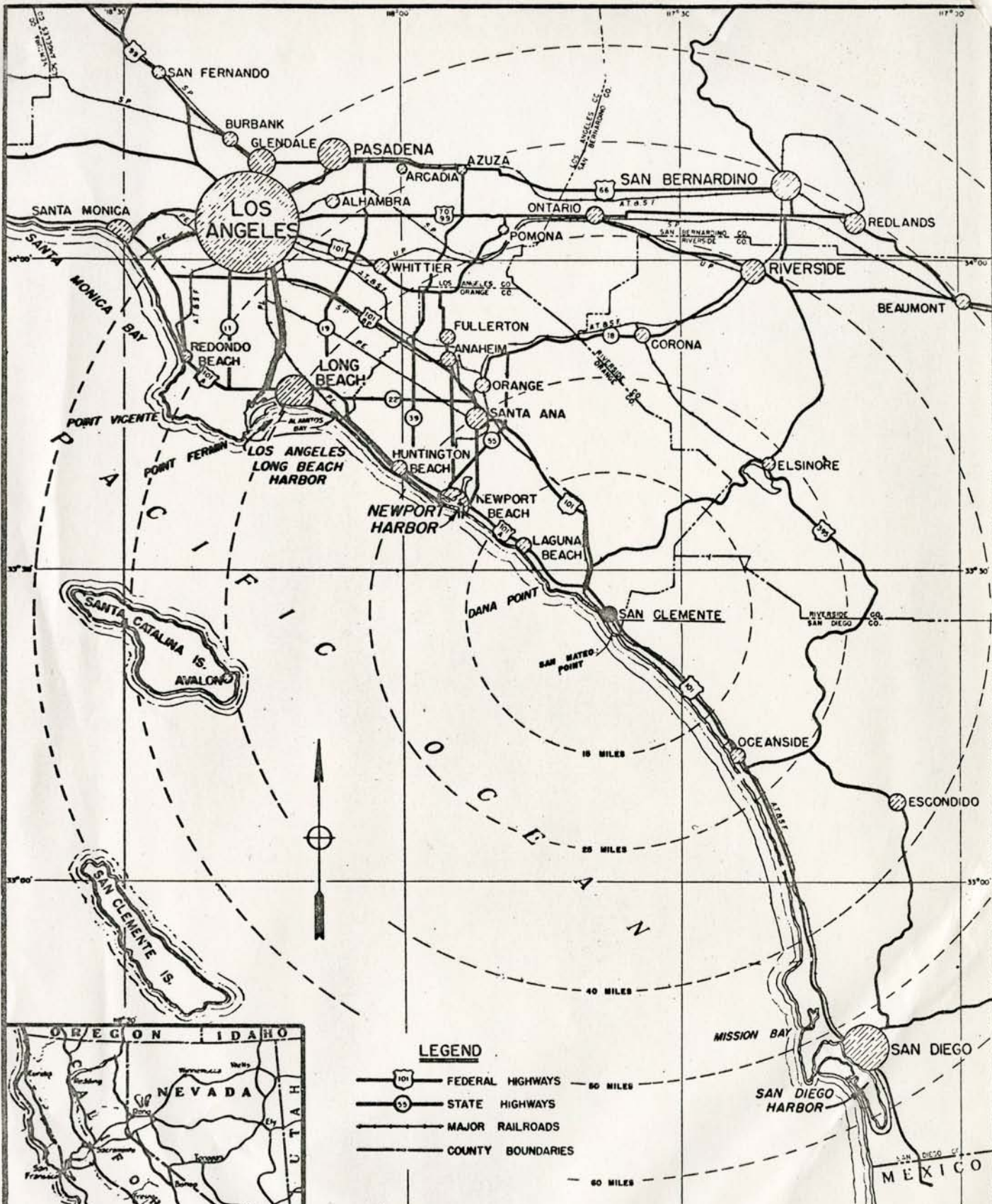
COUNTY OF ORANGE  
CALIFORNIA

*Property of Orange County Harbor Commission*

PRELIMINARY REPORT  
PROPOSED HARBOR  
AT  
DANA POINT---SAN CLEMENTE

November 10th., 1949

R.L.PATTERSON  
Consulting Engineer  
Newport Beach, Calif.



STATE OF CALIFORNIA  
 SCALE 0 100 200 300 MILES  
 AREA COVERED BY THIS MAP

**LEGEND**

- FEDERAL HIGHWAYS
- STATE HIGHWAYS
- MAJOR RAILROADS
- COUNTY BOUNDARIES

10 MILES  
20 MILES  
40 MILES  
60 MILES

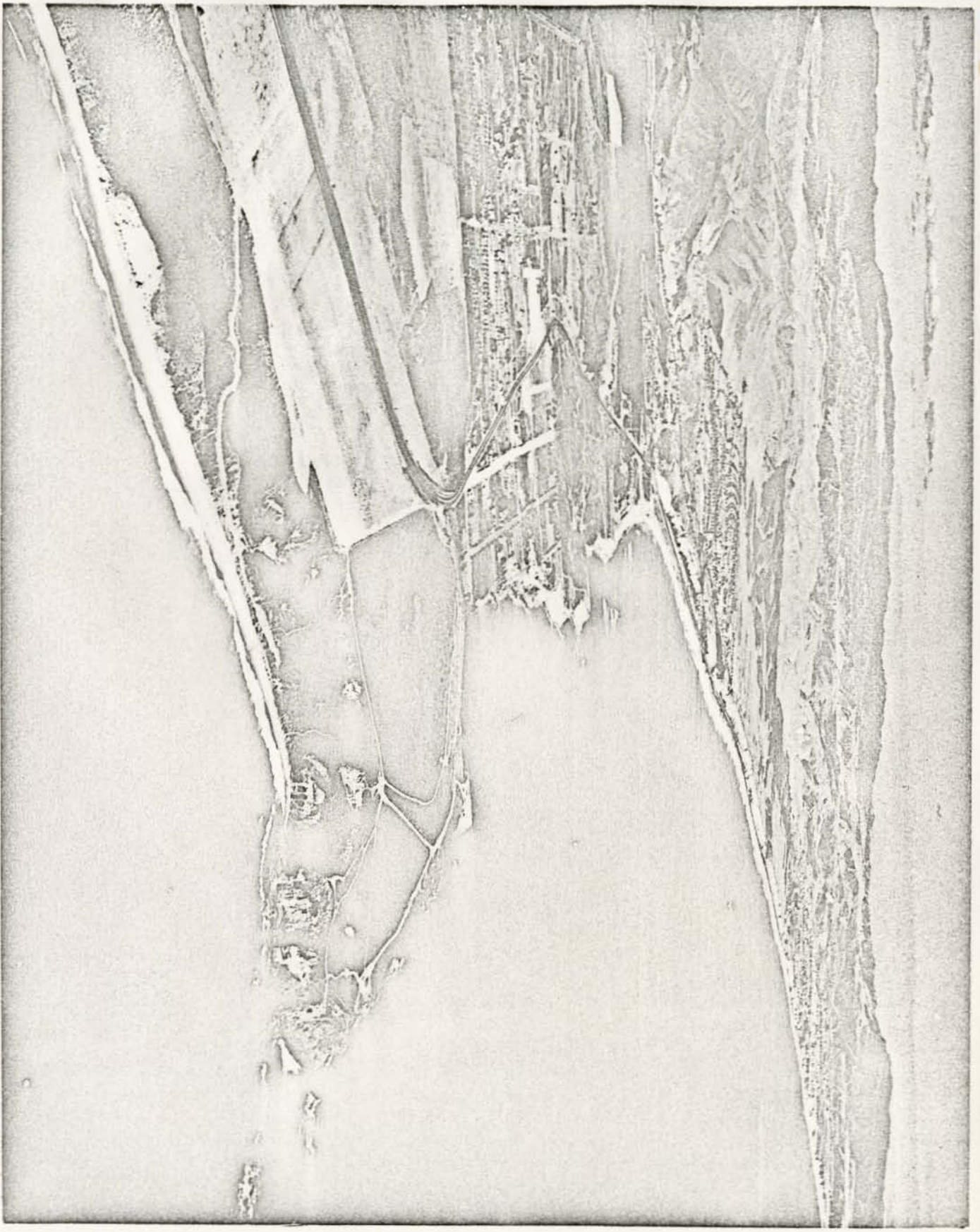
PRELIMINARY REPORT, DANA POINT-SAN CLEMENTE HARBOR, CALIF.

## VICINITY MAP DANA POINT-SAN CLEMENTE

SCALE 0 10 20 30 MILES

COUNTY OF ORANGE	PLATE
ORANGE COUNTY, CALIFORNIA	OCTOBER 15, 1949
R. L. PATTERSON	CONSULTING ENGINEER

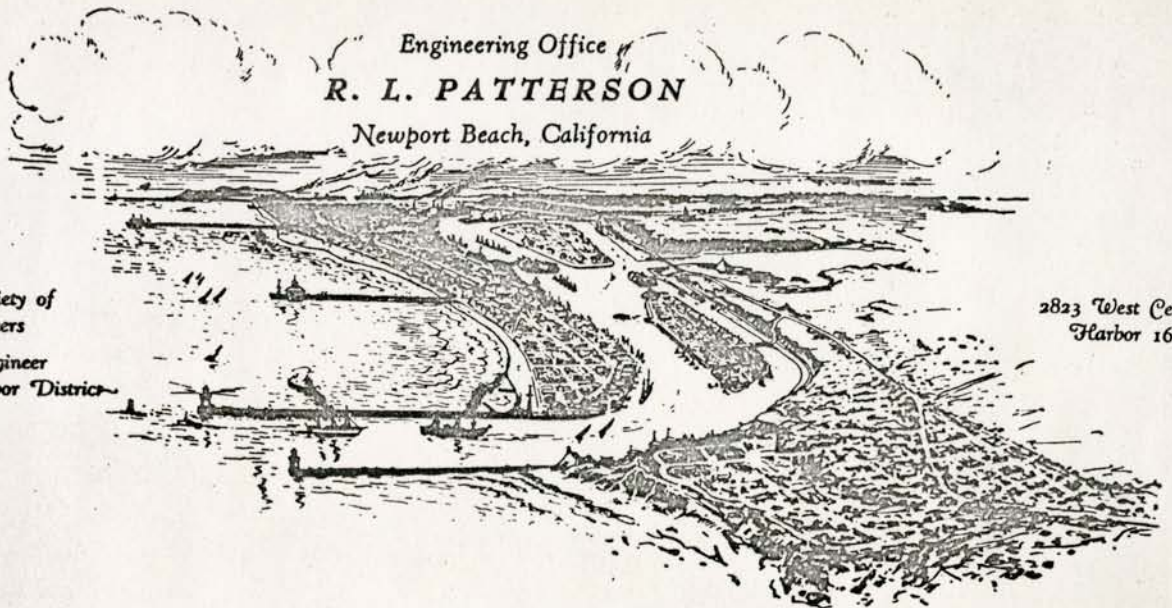
VIEW LOOKING DOWN COAST FROM DANA POINT



PACIFIC AIR INDUSTRIES  
C-47

Engineering Office  
**R. L. PATTERSON**

Newport Beach, California



American Society of  
Civil Engineers  
Consulting Engineer  
Orange County Harbor District

2823 West Central  
Harbor 160

November 10, 1949

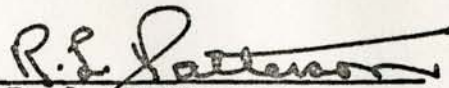
The Board of Supervisors  
County of Orange  
Santa Ana, California

Gentlemen:

Pursuant to my contract with the Board of Supervisors dated July 5, 1949, there is herewith submitted a preliminary report on "Dana Point-San Clemente Harbor." This report covers the results of a preliminary examination of the engineering feasibility and justification of a proposed small boat harbor.

Included in the report are preliminary plans and estimates of cost of small boat harbors at two locations, the first at Dana Point and the second at San Clemente, together with estimates of benefits, revenue, and methods of financing the project. The summary and conclusions are shown on page twenty-nine of the report.

Respectfully submitted,

  
R. L. Patterson  
Consulting Engineer

RLP:pw

## LIST OF PLATES

	Plate No.
Vicinity Map Dana Point-San Clemente	1
Locations of Proposed Harbors	
Dana Point-San Clemente	2
Preliminary Plan A, Dana Point	3
Preliminary Plan B, Dana Point	4
Preliminary Plan D, San Clemente	5
Shore Line and Off Shore Surveys	6
Shore Line and Off Shore Surveys	7











































































